



TRAVEL OUR VIRTUAL HIGHWAY MIDWEST AT A GLANCE

ISSUE NO. 6



There are no shortage of storylines for the architecture of the Midwest. Influenced by Mies van der Rohe and his contemporaries, and fueled by the culture and innovation of Chicago, past, present and future designers seek to push the limits. Artist Anish Kapoor's sculpture Cloud Gate (the Bean) beautifully reflects these past structural achievements and offers a glimpse of the possibilities.

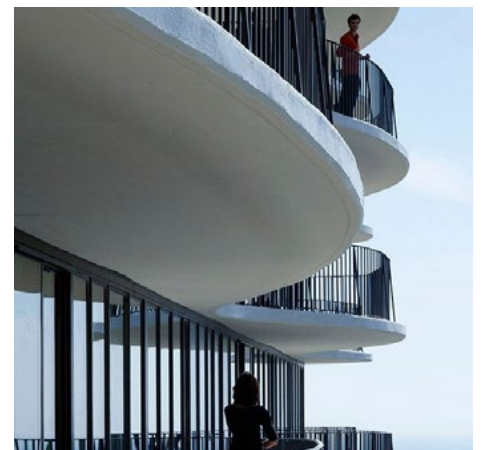
A 5-STATE MIDWESTERN TOUR OF AMERICA'S MODERN ARCHITECTURE



COLUMBUS, INDIANA is a living museum of art and architecture, with some 80 notable structures designed by the masters that shaped the modern movement. Saarinen, Venturi, Pei, and Chihuly are just a few who were commissioned by J. Irwin Miller, who set out to define a culture. For over 65 years this small Indiana town has been recognized as one of the most significant architectural destinations in the country. Watch the 2017 Sundance movie *Columbus* and **Learn more at www.columbus.in.us/guide-to-the-architecture**



CHICAGO, ILLINOIS has one of the country's most beautiful skylines, dotted with 126 amazing skyscrapers. Architect Jeanne Gang's Aqua Tower is one of the most unique, and part of the Millennium Modern. Its superstructure is a standard steel box, with its sculptured identity formed by the undulating concrete balconies and colored, reflective glass that create the illusion of pools of water. The varying shapes of the individual balconies allow residents to interact with each other both horizontally and vertically. A very unique attribute for any multi-story building. **Learn more at www.chicago.curbed.com**





SPRING GREEN, WISCONSIN

Known as the greatest American architect Frank Lloyd Wright moved his Chicago practice to the 800-acre estate, Taliesin. This National Historic Landmark of his home, studio, and garden was once a laboratory and school for young designers. Wright loved this Valley and the property which embodies everything he stood for - intertwining nature and the built environment.

Learn more at www.tourdeforce360.com/taliesin



MILWAUKEE, WISCONSIN

Located on the shore of Lake Michigan the Quadracci Pavilion addition to the Milwaukee Art Museum pulls its inspiration from the sails of a ship. Spanish architect Santiago Calatrava wanted to connect the grandeur of the lake with the hard-scape of the city with directional, yet suggestive lines. The sometimes transparent and ever changing structure moves visitors and views through all levels.

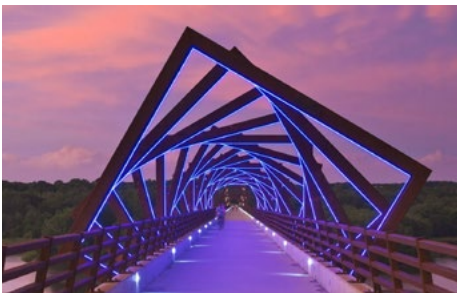
Learn more at www.mam.org/info/details/quadracci.php



MINNEAPOLIS, MINNESOTA

The Walker Art Center is one of the most respected museums in the country. For over 100 years this campus has tied the visual, performing, and media arts together, engaging visitors both inside and out. The shimmering cubic tower and linear glass entry addition link back to the original Edward Larrabee Barnes award-winning building. The theatre inside is equally respected for its expansive stage, yet intimate house.

Learn more at www.walkerart.org



WOODWARD, IOWA

Standing 13-stories above the Des Moines River the High Tressel Trail Bridge is one of the largest footbridges in the world. The one-half mile long, award-winning bridge design pays homage to the local coal industry. Dark bands represent veins of coal and the 41 "frames" spanning the bridge represent the crib structure in the mines on either side of the river.

Learn more at www.traveliowa.com/getinspiredetails/10-places-with-astounding-architecture

We all strive to make a difference. Some are inspired by what they see and others by what they do. No matter the source, we should all act on our inspiration - it is what makes us unique. Right now, during our Covid-19 challenge, it is the doctors, nurses, and caregivers who inspire us all with their committed dedication. Thank them and support them. Working together will strengthen all of us.

Be inspired,

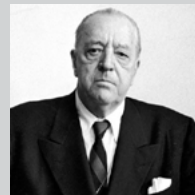
Becky



MEET THE ARCHITECTS



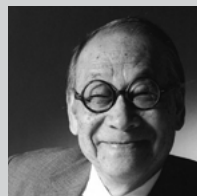
Frank Lloyd Wright



Ludwig Mies van der Rohe



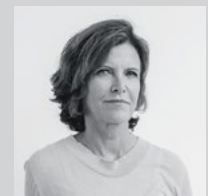
Eero Saarinen



I. M. Pei



Santiago Calatrava



Jeanne Gang

